

*R&D Specialists in Computer Vision*

# THE CITY+ SOLUTION

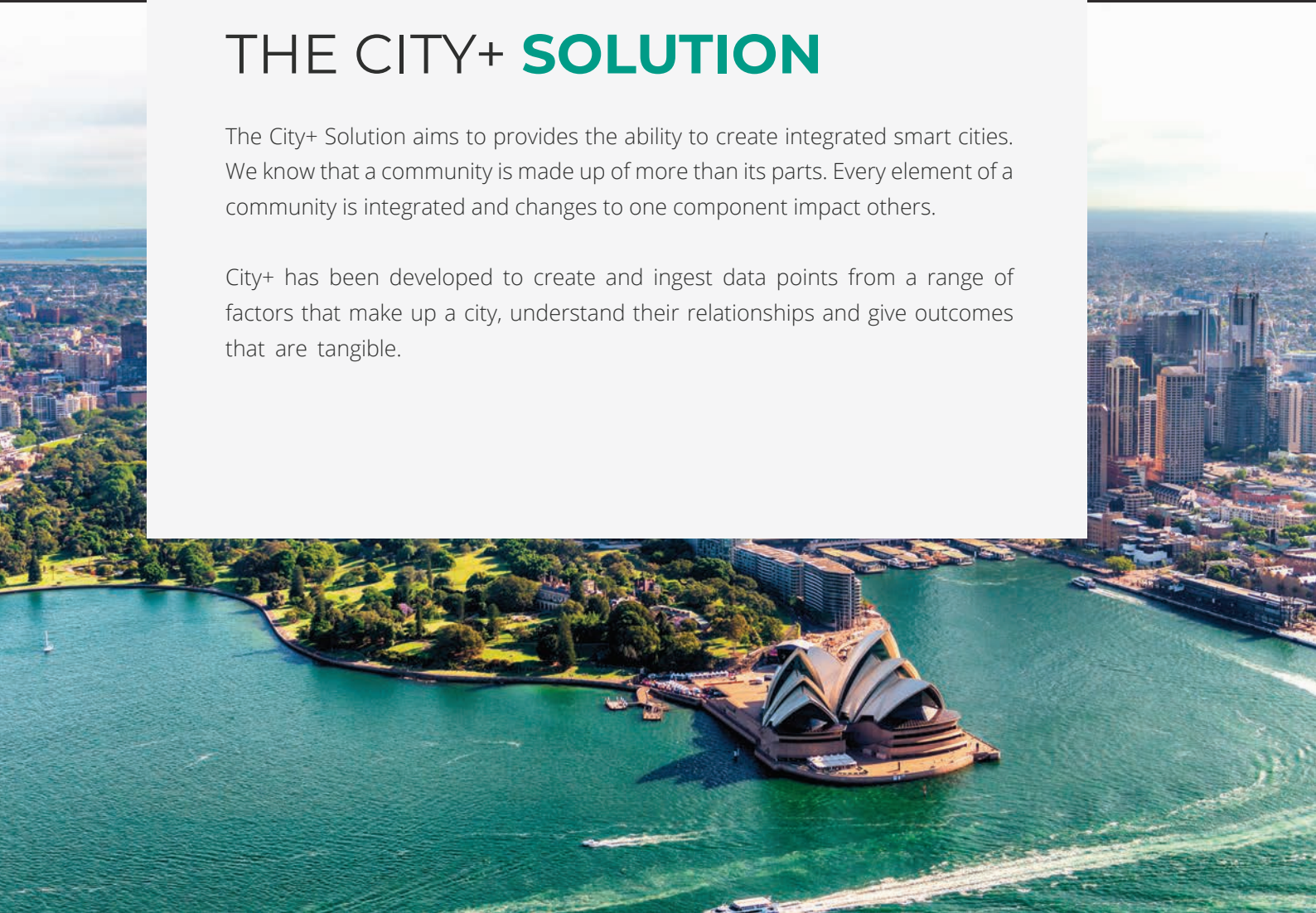
COMMUNITY SAFETY | BUILDING A SAFER TOMORROW



# THE CITY+ SOLUTION

The City+ Solution aims to provide the ability to create integrated smart cities. We know that a community is made up of more than its parts. Every element of a community is integrated and changes to one component impact others.

City+ has been developed to create and ingest data points from a range of factors that make up a city, understand their relationships and give outcomes that are tangible.



# Integrated community safety enables

+

## IMPROVED PUBLIC SPACE UTILISATION

A sense of safety is critical to creating public spaces that are useable. Our solution ensures the community feel a sense of security through lighting and video, providing real time alerts for possible events.

+

## INCREASE ACTIVE TRANSPORT OPPORTUNITIES

Increasing the sense of safety and useability will increase a community's demand for active transport options such as walking and bike riding. Detect loitering and other acts of anti-social behaviour to unlock opportunities for better connectedness.

+

## EQUITABLE ACCESS FOR ALL

Improving safety for vulnerable and diverse people, ensures more people can enjoy and utilise public spaces. Understanding usage data and peak times of crowd density can inform place design, environmental considerations, and management approaches.

+

## REAL-TIME NOTIFICATIONS

Know when an event is occurring within a public space. Loitering or vandalism notifications can be enabled in real time to allow you to better manage safety incidents immediately.

+

## INTER-AGENCY COLLABORATION

Through the deployment of our video management solution, you can provide access to policing agencies to allow live viewing of events. Providing a secure connection that is completely tracked and logged, you can work more closely with authorities to ensure your city remains safe.

## Improve your city's perception of safety



### *Better manage the supply and demand of parking*

Through the automation of parking compliance, you can ensure you are managing the supply and demand of your parking resources. Managing parking compliance is resource heavy, allow your officers to manage parking remotely at any time of the day.

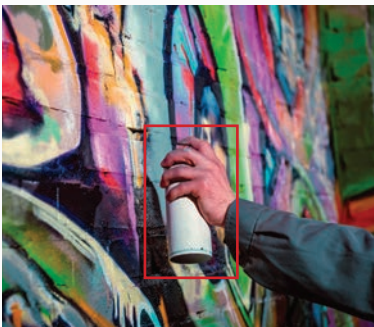
Our parking compliance solution allows Council to monitor timed parking locations, illegal parking hotspots and high-risk areas such as loading zones, bus stops and no stopping areas. Receiving real-time alerts to their devices of illegal parking allows officers to respond to these events remotely, in real-time or within normal business hours.



### *Eliminate illegal dumping in your city*

Ensure that illegal dumping is eliminated in your community. Monitor for changes to your environment, track those who have illegally dumped, and be notified in real-time that a potential illegal dumping incident has been detected.

Our portable wind/ solar technology enables Council's to be dynamic in the fight against illegal dumping – and not limited by remote location. The ability to set up monitoring stations in remote areas that otherwise would go unprotected is a significant step forward in keeping our cities clean and safe.



### *Create safe places by eliminating anti-social behaviour*

Monitor for anti-social behaviour such as graffiti and vandalism at existing, refurbished or newly planned community assets. Our solution provides you with real-time alerts to a desktop or mobile device. The event information includes images of the incident with date & time stamps to enable a proactive response to anti-social behaviour.



### *An extra pair of eyes for water safety*

Ensure your community and visitors are kept water safe through our advanced machine learning model. Deployable to indoor and outdoor pools as well as beaches, our technology provides another set of eyes on your water to watch for distressed swimmers or watercraft (i.e., jet skis and boats) entering restricted zones.

Understand beach density (the number of people in a specific location), the number of people swimming between the flags and if people are swimming outside the flags. This data can be provided to your lifeguards in real-time through via mobile devices to act on immediately.



### *Stay connected to your people*

Our technology can be deployed to integrate into current body worn technology or to introduce body worn technology to your Council. Using our policing technologies to build useable human centred safety technology, you can ensure your officers stay safe while in the field.

Enable distress signalling and object recognition on your officers to ensure they can undertake their duties knowing they are always supported.

## Understand your community like never before



### *Invest in the right places, knowing you are basing decisions on data*

Applying our artificial intelligence and machine learning tools, we can deliver predictive analysis to better understand potential or future hotspots. Embedded in native applications to Councils such as PowerBI, our data experts can create views to assist decisions on place planning and design, lighting, and amenity to create safer cities.



### *Optimise your place making and design*

Understand your how your community uses public spaces like never before. Using business intelligence reporting, you can interact with your data to enjoy utilisation, safety, and other insights, tracking their performance over time.

## Our people

From design to implementation, we will work with you to plan, design, and deliver your City+ solution.

Embedding ourselves to deeply understand the needs of your business, we will partner with you to facilitate workshops, develop documentation, and deliver your project.

Our dedicated team of professionals brings a wealth of knowledge from both government and private sectors to ensure your solution is fit for purpose, delivers tangible results, and is used to create change and enhance innovation.

## Support & Maintenance

We take a collaborative approach to our support and maintenance practice, ensuring you are continually at the forefront of what we are developing. Our support team will work closely with you to maximise your solutions capability.

## Training & Resources

We continue to develop easy to deploy, easy to digest training material and user interfaces. You will have access to our library of guides and community of users to discuss, brainstorm and consider new enhancements.

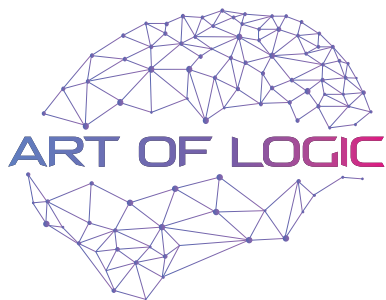
## Ready to learn more?

Our team is here to help. Contact us for more information, product demos and advice.



[www.artoflogic.ai](http://www.artoflogic.ai)





R&D Specialists in Computer Vision

---

## The City+ Solution

Creating Integrated Smart Cities

### CONTACT

1300 123 300

[sales@artoflogitech.com](mailto:sales@artoflogitech.com)

### ADDRESS

Adelaide, South Australia

Sydney, New South Wales



Let us tell you more about the amazing things we do.

[www.artoflogic.ai](http://www.artoflogic.ai)